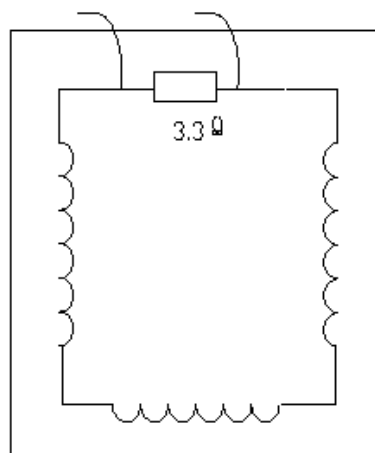


**Model FAC0446**

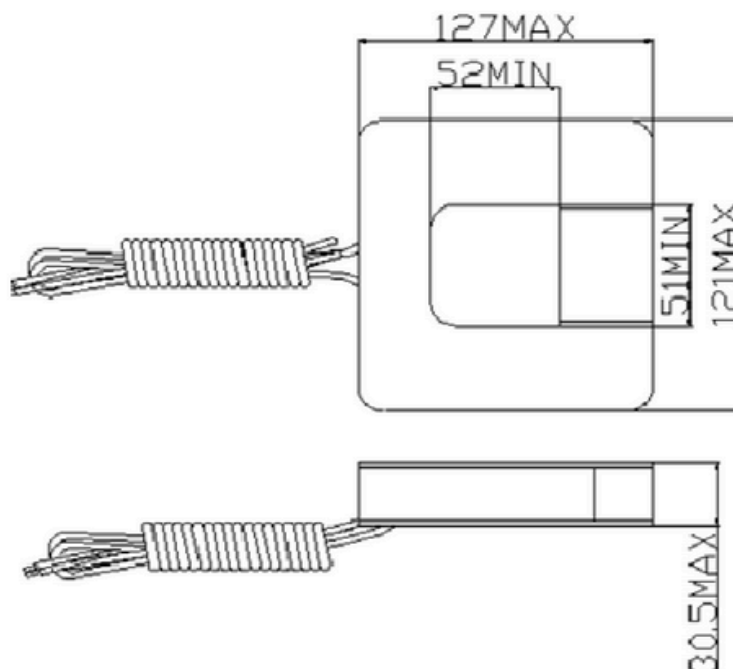
Current transformer 800A/0.33V

**Structure Drawing**

Mechanical Dimensions (unit : mm)



Drawing size:



**Test Report**

1 Performance Test

A Test condition

Input 200A, output 82.8 mV -84.8 mV



b Test record (Phase error unit: minute)

| ( No.) |        | Input  | Input   | Input  | Input | (Instrument)  |
|--------|--------|--------|---------|--------|-------|---|
|        |        | 8A     | 100A    | 200A   | 800A  |   |
| 1      | Output | 3.30mV | 41.30mV | 82.7mV | 331mV | XF30A-3Multifunction calibrator<br>TH1951 5 1/2 Digital meter |
| 2      |        | 3.33mV | 41.50mV | 82.9mV | 332mV |   |

c Test results

Finished product qualified

Material list

| No. | Materials          | Specifications      |
|-----|--------------------|---------------------|
| 1   | Silicone steel     | 800A                |
| 2   | Case               | 800A                |
| 3   | Enameled wire      | Φ0.25mm/QA-1(130°C) |
| 4   | Loading Resistance | 3.3Ω                |
| 5   | Wire lead          | 11.26               |

